

A man with long, curly hair, wearing a black t-shirt, khaki shorts, and tan work boots, is smiling broadly. He is wearing a black cap with 'JETPILOT' on it, sunglasses, and a black tool belt with a 'BUCKAROD' brand strap. He is standing in a construction site with a large pile of dirt and wooden framing in the background. The scene is brightly lit, suggesting a sunny day.

**JETPILOT**

# WORKWEAR

R A N G E

MADE FOR WATER AND WORK



## CONTENTS

<b>HYBRID JET-LITE</b>	<b>4</b>
<b>JET-LITE</b>	<b>8</b>
<b>COTTON CANVAS</b>	<b>18</b>
<b>TOPS</b>	<b>28</b>
<b>ACCESSORIES</b>	<b>46</b>
<b>PROMO ITEMS</b>	<b>54</b>

Close Off Date  
**Friday, 1st September**

View our size and fit guides online  
at [jetpilot.com.au](http://jetpilot.com.au)



# HYBRID JET-LITE™ TECHNOLOGY

## The Fit And Function Of Cotton With The Features Of Jet-Lite™

Made with natural fibres for improved comfort and performance.

### Unbeatable Strength

200% stronger than cotton.

### Flexible & Light

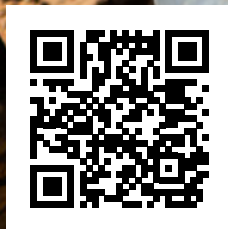
50% lighter than cotton, Nano elastane fibres reduce fatigue and boost mobility.

### Thermo-regulating

Smart fabric responds to humidity and regulates body temp in warm and cool conditions.

### Chlorine / Bleach Resistant

Repels oils & liquids, anti-odour, water and stain resistant.



RULER AND 2 REAR WELT POCKETS

ENGINEERED POCKETS TO FIT HEAVY DUTY PHONE CASES

INTERNAL/EXTERNAL DRAW CORD



TRIPLE STITCH CONSTRUCTION

PERFORMANCE STRETCH CROTCH

100% STRETCH





Black

Navy

## ELASTIC WAIST PANT

### HYBRID JET-LITE PANT

- 4 Way Stretch Dry-Fit Polyester And Natural Fibres, Creating A Product With Superior Strength Exceptional Comfort
- Reinforced Front Entry Pockets
- Engineered Pockets To Fit Heavy Duty Phone Cases
- Secure Zip-Lock Pockets Left Front Hip And Right Side
- Ruler Pocket And 2 Rear Welt Pockets
- Internal/External Waist Draw Cord
- Comfort Heavy Duty Jacquard Logo Waistband
- Triple Stitch Construction
- Bar-Tacks At Stress Points
- Thermo Regulating
- UV Protection
- Signature Jetpilot Workwear Trims
- Straight-Fit Utility Pant

28 30 32 34 36 38 40 42 44

\$99.99

JPW83



Khaki



Black



Navy



Khaki

## HYBRID WALKSHORT

### 17" HYBRID JET-LITE SHORT

- 4 Way Stretch Dry-Fit Polyester And Natural Fibres, Creating A Product With Superior Strength Exceptional Comfort
- Reinforced Front Entry Pockets
- Engineered Pockets To Fit Heavy Duty Phone Cases
- Secure Zip-Lock Pockets Left Front Hip And Right Side
- Ruler Pocket And 2 Rear Welt Pockets
- Internal/External Waist Draw Cord
- Comfort Heavy Duty Jacquard Logo Waistband
- Triple Stitch Construction
- Bar-Tacks At Stress Points
- Thermo Regulating
- UV Protection
- Signature Jetpilot Workwear Trims
- Straight-Fit Utility Short

28 30 32 34 36 38 40 42 44

\$69.99

JPW76





# JET-LITE™

## TECHNOLOGY

**Unbeatable Strength**

200% stronger than cotton.

**Flexible & Light**

50% lighter than cotton, Nano elastane fibres reduce fatigue and boost mobility.

**Breathable**

Dries 5 times faster than cotton, custom weave for air flow and wick sweat.

**Thermo-regulating**

Smart fabric responds to humidity and regulates body temp in warm and cool conditions.

**Anti-oleophilic**

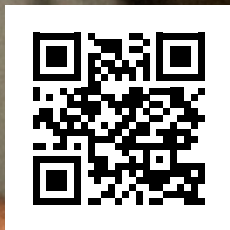
Repels oils & liquids, anti-odour, water and stain resistant.

**UV Resistant**

UV Coated fibres, 95% light blockout, Non fade on fabric.

**Chemical Free Fabric**

No chemical fabric coating, smart yarn composition and textile constructions.







INDUSTRY FIRST TECHNOLOGY  
**BEST  
SELLER**



Black



Khaki



Navy

## UTILITY SHORT

### 20" JET-LITE SHORT

- 100% Stretch Ultra Lite – Quick Dry Fabrication
- Performance Bias Gusset
- Reinforced Pockets
- Reinforced Back Panel
- Custom Side Entry Pocket Shape For Clip Application
- Rear Carpenter Pocket
- Internal Waist Draw Cord
- Triple Stitch Construction
- Bar-Tacks At Stress Points
- YKK Zipper
- Straight-Fit Utility Short

28 30 32 34 36 38 40 42 44

\$69.99

JPW06







Khaki

## UTILITY PANT

### JET-LITE PANT

- 100% Stretch Ultra Lite – Quick Dry Fabrication
- Performance Bias Gusset
- Reinforced Pockets
- Reinforced Back Panel
- Custom Side Entry Pocket Shape For Clip Application
- Rear Carpenter Pocket
- Internal Waist Draw Cord
- Triple Stitch Construction
- Bar-Tacks At Stress Points
- YKK Zipper
- Straight-Fit Utility Pant

28 30 32 34 36 38 40 42 44

\$89.99

JPW19



Black

Navy



Navy

3M SCOTCHLITE REFLECTIVE 5510 SEGMENTED TAPE



## TAPED UTILITY PANT

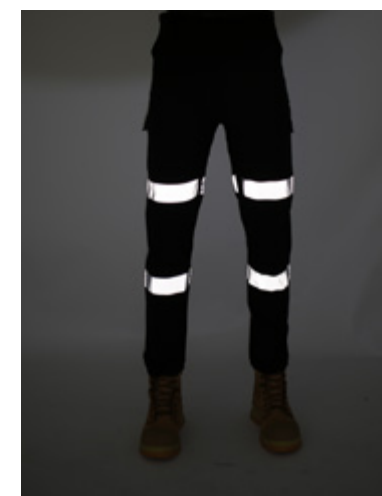
### TAPED JET-LITE PANT

- 100% Stretch Ultra Lite – Quick Dry Fabrication
- Performance Bias Gusset
- Articulated Knees
- Reinforced Pockets
- Reinforced Back Panel, Knees And Cuffs
- Custom Side Entry Pocket Shape For Clip Application
- Rear Carpenter Pocket
- Internal Waist Draw Cord
- Triple Stitch Construction
- Bar Tacks At Stress Points
- YKK Zipper
- Straight-Fit Utility Pant
- Double 3m Reflective Taping

28 30 32 34 36 38 40 42 44

\$119.99

JPW19T





"I recently purchased a pair of zip-off pants - they have been an absolute game-changer for me on the worksite. It is so easy to convert the pants to shorts and back again, and has made my workdays so much more comfortable and convenient."



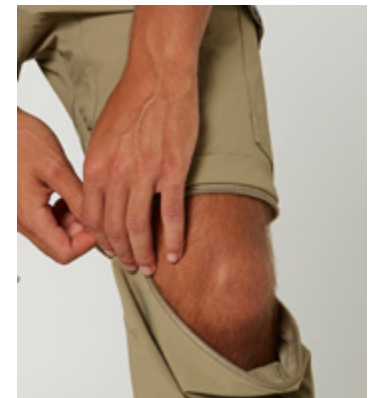
Black

Navy

Khaki

**UTILITY ZIP OFF PANT**  
**JET-LITE 2-IN-1 PANT**

- 100% Stretch Ultra Lite
- Quick Dry Fabrication
- Performance Bias Gusset
- Articulated Knees
- Reinforced Pockets
- Reinforced Back Panel, Knees And Cuffs
- Custom Side Entry Pocket Shape For Clip Application
- Rear Carpenter Pocket
- Rear Double Layer Internal Pocket Bags
- Internal Waist Draw Cord
- Triple Stitch Construction Bar Tacks At Stress Points
- YKK Zipper
- UV Protection And Breathability
- Straight-Fit Utility Pant



28 30 32 34 36 38 40 42 44

\$99.99

JPW73







Black



Navy



Olive

## FUELED WALKSHORT

### 16" JET-LITE SHORT

- Slim-Fit Short
- 16" Leg Length
- Reinforced Front Entry Pockets
- Custom Side Entry Pocket Shape For Clip Application
- Internal Waist Draw Cord
- Triple Stitch Construction
- Bar-Tacks At Stress Points
- YKK Zipper
- Bullet Weave Signature Back Loop
- 100% Stretch Fabrication For Ease Of Movement

28 30 32 34 36 38 40 42 44

\$59.99

JPW07



Khaki



Navy

## JET-LITE BOARDSHORT

### 18" JET-LITE SHORT

- 18" Leg Length
- 100% Stretch Ultra Lite – Quick Dry Fabrication
- Performance Bias Gusset
- Reinforced Pockets
- Reinforced Back Panel
- Internal Waist Draw Cord
- Triple Stitch Construction
- Bar-Tacks At Stress Points
- YKK Zipper
- Uv Protection
- Straight-Fit Utility Short

28 30 32 34 36 38 40 42 44

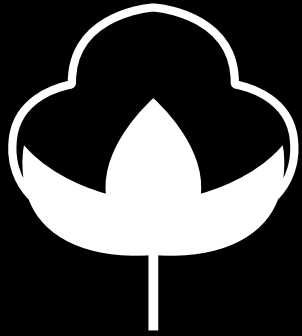
\$59.99

JPW39



Black

Khaki



COTTON CANVAS

**All Natural:**

Cotton Canvas range is made from premium 100% natural fibre cotton.

**Seriously Tough:**

Cotton Canvas is dependable and durable, suitable for every job site.

**UV Protection:**

50+ UV protection for the harsh Australian Climate.

**Triple Stitch:**

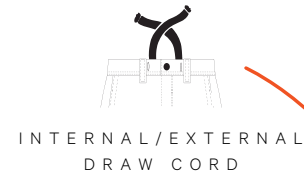
Triple stitch construction for those that don't shy away from hard-work.

**4-Way Stretch:**

100% stretch through the heavy-duty weave for ease of movement.

**Extra Stretch Crotch:**

Never have to 'wear in' a pair of pants again, with our extra stretch panelling in the crotch area.



**50+**  
UV  
PROTECTION



**X2**  
DOUBLE LAYER  
REINFORCEMENT







Khaki



Black



Navy

## FUELED UTILITY WALKSHORT

20" COTTON CANVAS SHORT

- Straight-Fit Utility Short
- 20" Leg Length Sits Just Above Knee
- Performance Bias Gusset
- Bullet Weave Reinforced Pockets
- Custom Side Entry Pocket Shape For Clip Application
- Rear Carpenter Pocket
- Internal Waist Draw Cord
- Triple Stitch Construction
- Bar-Tacks At Stress Points
- YKK Zipper
- 100% Stretch Fabrication For Ease Of Movement

28 30 32 34 36 38 40 42 44

\$69.99

JPW03



Khaki

## FUELED WALKSHORT

16" COTTON CANVAS SHORT

- Slim-Fit Short
- 16" Leg Length
- Reinforced Front Entry Pockets
- Custom Side Entry Pocket Shape For Clip Application
- Internal Waist Draw Cord
- Triple Stitch Construction
- Bar-Tacks At Stress Points
- YKK Zipper
- Bullet Weave Signature Back Loop
- 100% Stretch Fabrication For Ease Of Movement

28 30 32 34 36 38 40 42 44



Black



Navy

\$49.99

JPW05



Khaki

Navy

Black

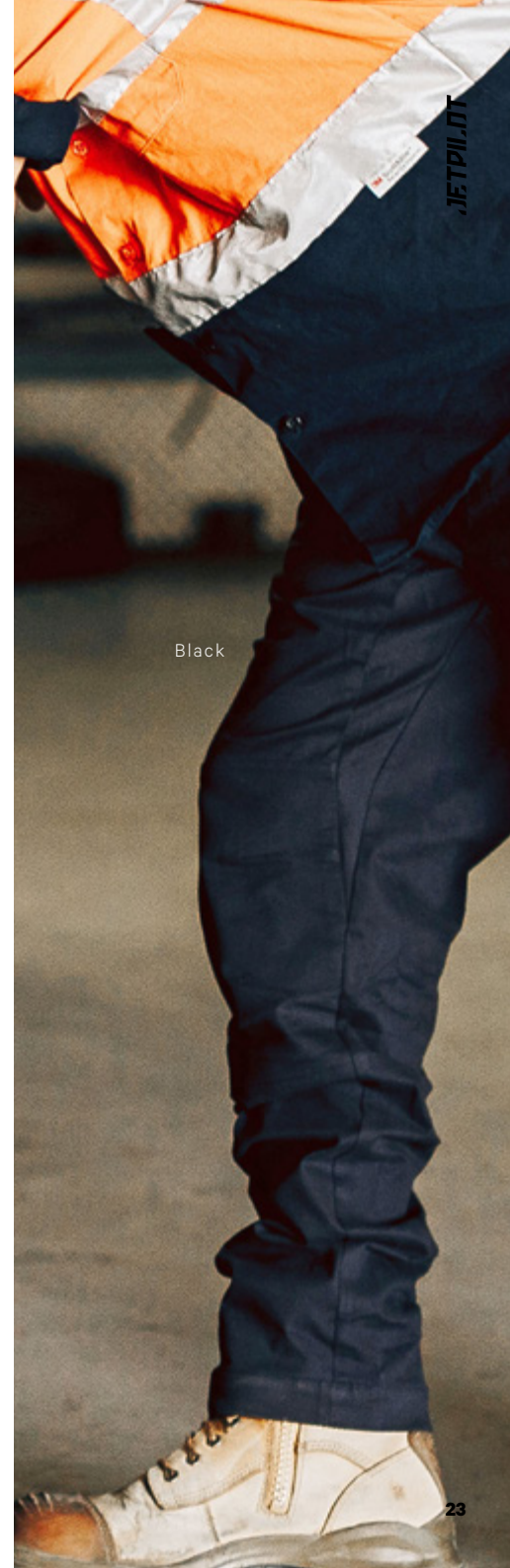
### FUELED UTILITY PANT COTTON CANVAS PANT

- Straight-Fit Utility Pant
- 100% Stretch Fabrication For Ease Of Movement
- Performance Bias Gusset
- Bullet Weave Reinforced Pockets
- Rear Carpenter Pocket
- Internal Waist Draw Cord
- Triple Stitch Construction
- Bar-Tacks At Stress Points
- YKK Zipper
- Articulated Knees

28 30 32 34 36 38 40 42 44

\$89.99

JPW01







Black



Khaki



Navy

## FUELED CUFFED PANT

COTTON CANVAS PANT

- Slim-Fit Cuffed Pant
- 100% Stretch Fabrication For Ease Of Movement
- Performance Bias Gusset
- Elasticated Cuffs
- Reinforced Knees And Front Entry Pockets
- Internal Waist Draw Cord
- Triple Stitch Construction
- Bar-Tacks At Stress Points
- YKK Zipper
- Bullet Weave Signature Back Loop
- Articulated Knees

28 30 32 34 36 38 40 42 44

\$79.99

JPW02



Navy

3M SCOTCHLITE REFLECTIVE 5510 SEGMENTED TAPE



## TAPED CUFFED PANT

COTTON CANVAS PANT

- Slim-Fit Cuffed Pant
- 100% Stretch Fabrication For Ease Of Movement And Comfort
- Performance Bias Gusset
- Elasticated Cuffs
- Reinforced Knees And Front Entry Pockets
- Internal Waist Draw Cord
- Triple Stitch Construction
- Bar-Tacks At Stress Points
- YKK Zipper
- UV Protection And Breathability
- Reflective Strips

28 30 32 34 36 38 40 42 44

\$109.99

JPW02T





Black

Olive

Navy

## FUELED CORRUGATED PANT

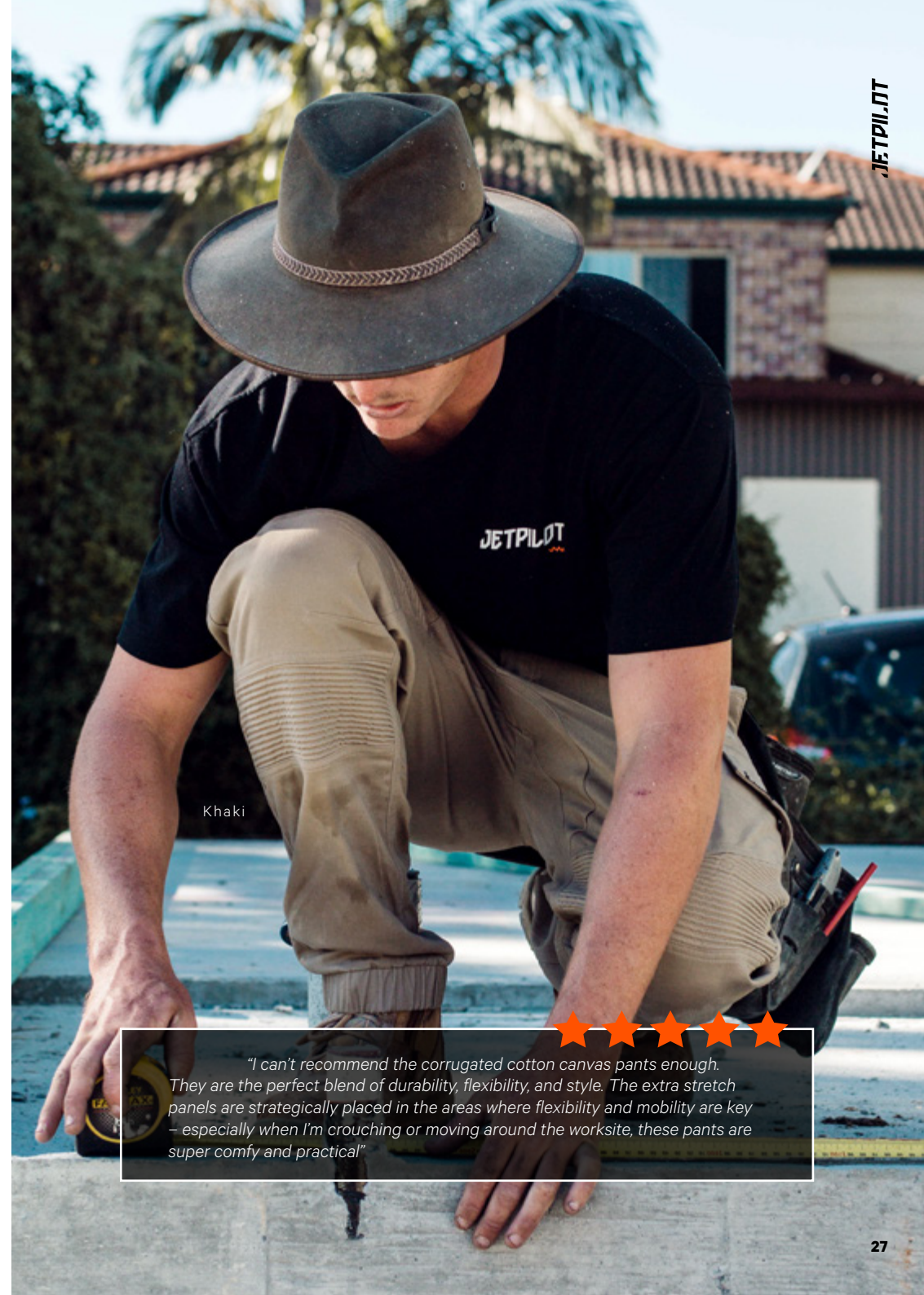
### COTTON CANVAS STRETCH PANT

- Slim-Fit Cuffed Pant
- Pintuck Panel Construction
- 100% Stretch Fabrication For Ease Of Movement
- Performance Bias Gusset
- Articulated Knees
- Elasticated Cuffs
- Reinforced Knees And Front Entry Pockets
- Internal Waist Draw Cord
- Triple Stitch Construction
- Bar-Tacks T Stress Points
- YKK Zipper
- Bullet Weave Signature Back Loop

28 30 32 34 36 38 40 42 44

\$99.99

JPW28



Khaki

*"I can't recommend the corrugated cotton canvas pants enough. They are the perfect blend of durability, flexibility, and style. The extra stretch panels are strategically placed in the areas where flexibility and mobility are key – especially when I'm crouching or moving around the worksite, these pants are super comfy and practical!"*



# TOPS







Rust



Black

**QUILTED SHERPA**  
JACKET

- 200gsm Brushed Cotton / Polyester Flannel Outer
- Double Eyelet 3 Panel Hood With Tie
- Internal Sherpa Hood Lining
- Internal Padded Quilted Polyester Body Lining
- Snap Front Closure
- Double Front Patch Pockets
- Scooped Back Tail
- PVC Label And Custom Trims

**S M L XL 2XL 3XL**

**\$99.99**

**JPW84**







**WATER / STAIN  
RESISTANT**

Black



## CANVAS JACKET

JACKET

- 270gms Water / Stain Resistance Canvas Outer Shell
- 200gsm Cotton Flannel Body Lining With Poly Padding
- Button Front Closure
- Dual Front Patch Pockets With Flaps And Button Closure
- Left Sleeve Pocket
- PVC Label And Custom Trims

**S M L XL 2XL 3XL**

\$119.99

JPW85



Black



## ZIP UP VEST

- 185gms Water / Stain Resistance Polyester Outer Shell
- 250gsm Polar Fleece Body Lining With Polyester Padding
- Strong Nylon Zippered Front Closure
- Dual Front Zippered Welt Pockets
- Internal Zippered Right Pocket
- Adjustable Internal Toggles On Hem
- PVC Label And Custom Trims

S M L XL 2XL 3XL

\$69.99

JPW86



DURABLE WATER PROOF 320D NYLON  
TASLON MATERIAL



SCUBA NECK HOOD



BREATHABLE  
UNDERARM  
ZIP PANELS



ADJUSTABLE CUFFS AND  
WAIST SYNCH



MULTI INTERNAL AND  
EXTERNAL UTILITY  
STASH POCKETS



WATER RESISTANT ZIPPERS

## VENTURE OUTDOOR JACKET

- 8000mm MVP Barrier Shell
- 100% Nylon Ottoman With Hydro Coating
- Waterproof Front Zipper
- Scuba Hood With Zip Shield
- Zipper Armpit Vents With Mesh Lining
- Velcro Adjustable Cuffs
- Pvc Patch
- Custom Trims

S M L XL 2XL 3XL

\$189.99

JA24169





**INTERNAL OPENING FOR EASY CUSTOMISATION**  
SCREENPRINT / EMBROIDERY

**ONSITE PRO**  
JACKET

- 100% Polyester Outer Shell And Lining
- Polyester Padded Body
- Internal Body And Hood Lining
- Silicone Coated Waterproof Zips
- Metal Front Zipper
- Hood With Adjustable Drawstring
- Custom Stitch Body Detail Stitching
- Internal Mobile Phone
- Zippered And Snap Covered Flap Pocket
- Durable
- Breathable
- Water Resistant 5000mm
- Breathability 6,000 G/M2
- Windproof 1 Cfm



Charcoal

Black

S M L XL 2XL 3XL

\$109.99

JPW57



**ONSITE**  
JACKET

- 100% Polyester Outer Shell And Lining
- Polyester Padded Body
- Internal Body And Hood Lining
- Hood With Adjustable Drawstring
- Internal Mobile Phone
- Water Resistant 5000mm
- Breathability 6,000 G/M2
- Windproof 1 Cfm
- Limited Inventory



Navy

S M L XL 2XL 3XL

\$109.99

JPW58



Orange



Mustard



Red



Blue



Black

## QUILTED FLANNEL JACKET

- 300gsm Cotton Flannel Outer / 210t Polyester Taffeta Quilted Lining
- Dual Layer Construction For Extra Warmth
- Internal Zip Closure With Plastic Buttons On Outer Layer
- Quilted Lining With 100% Polyester Fill
- Large Comfortable Hood With Peak And Toggle System To Tighten
- Large Chest Pockets With Button Closure
- Signature Jetpilot Workwear Trims

S M L XL 2XL 3XL

\$129.99

JPW49



★★★★★

*"As someone who works in construction and spends long hours outdoors, this jacket has become an essential for me for those chilly mornings. The flannel provides warmth and a rugged look while the second internal quilted layer offers exceptional warmth."*





DURABLE



BREATHABLE



Orange



Red



Blue



Black



Mustard

## FLANNEL SHIRT

- 300GSM Cotton Flannel
- Patch Pockets With Button Closure
- Jetpilot Front Woven Trim

**S M L XL 2XL 3XL**

**\$79.99**

**JPW50**





Black



Grey

## FUELED 2 PULLOVER HOODIE

- 320GSM Poly/Cotton Fleece
- One Colour Front Print
- One Colour Back Print
- Internal Woven Label
- Internal Woven Size Pip

S M L XL 2XL 3XL

\$59.99

JPW63



Black



Grey

## FUELED 2 S/S TEE

- One Colour Front Print
- Internal Screenprinted Label
- Internal Woven Size Pip
- Regular Fit – Crew Neck
- High Visibility Safety Garmen, Class D + Hi-Vis Certification As/NZS 1906.4 Standard
- Heavy Weight, 200 GSM

S M L XL 2XL 3XL

\$34.99

JPW65







**HI VIS LOW HIT**  
S/S TEE

- One Colour Front Print
- Internal Screenprinted Label
- Internal Woven Size Pip
- Regular Fit – Crew Neck
- High Visibility Safety Garmen, Class D + Hi-Vis Certification As/NZS 1906.4 Standard
- Heavy Weight, 200 GSM

**S M L XL 2XL 3XL**

**\$39.99 JPW47**



Hi-Vis Yellow



Hi-Vis Orange





# ACCESSORIES







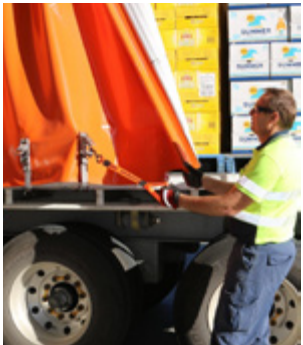
# JET PILOT



## strongarmstrap

**PULL WITH EASE, NOT INJURY**

An injury prevention invention designed by medical specialists. Gain better leverage to pull heavy, hard to reach high/low items easily.



### JETPILOT X STRONGARM STRAP

#### STRONG ARM STRAP

- Durable Rubber Foam Reinforced Handle
- Ergonomically Designed
- High Tensile Strength Polyester Webbing
- Heat Treated / Rubber PE Coated S Hook
- All Box Stitching For Durability 300D High Strength Polyester Line
- Heat Transfer Logo
- Hook It, Drag It, Pull It



\$49.99

ACS24900

SOLD IN PACKS OF 3  
1 OF EACH COLOUR

RECEIVE A FREE  
PULL UP BANNER  
WITH 5 PACK MIN. ORDER



FINAL ART SUBJECT TO CHANGE

**JET-LITE™ SNAPBACK**

CAP

- 100% Stretch Jet-Lite
- Quick Dry Fabrication
- Recycled Plastic Bio Tech Peak
- 100% Watersports Capable

OSFM

\$24.99

JPW72



50+



100%


**JET-LITE**  
TECHNOLOGY

 BIO-TECH  
JETPIL.OT
**JET-LITE™ WIDE BRIM**

HAT

- Quick Dry Fabric
- Lightweight And Breathable
- Adjustable And Removable Chin Strap
- UPF50+ Sun Protection
- Custom Trim

OSFM

\$39.99

JPW74

**FUELED STRAW**

HAT

- Straw Hat
- Wide Brim For Sun Protection
- Woven Ww Patch At Front
- Drawcord And Adjustable Toggle.

S/M L/XL

\$24.99

JPW30

**VENTURE LEGIONNAIRE**

CAP

- Quick Dry Jet-Lite™ Fabric
- UPF50+ Sun Protection
- Lightweight And Breathable
- Removable Legionnaire Flap
- Internal Anti-Sweat Band
- Toggled Chin Strap
- Custom PVC Badging

OSFM

\$29.99

S23800


 REMOVABLE  
LEGIONNAIRE FLAP  
EASY & FAST
**ADJUSTABLE WORKWEAR BELT**

BELT

- Heavy Duty Elasticated Webbing
- Micro-Adjustable Buckle For One Size Fits Most Size
- Up To 42" (101.6cm)
- Lightweight, Low Profile Buckle
- No Metal For Easy Passage Through Security
- Washer Dryer Safe.

OSFM

\$29.99

JPW46







Grey

## VENTURE ESKY

### ESKY

- Internal Size 42cm x 24cm x 32cm - Volume is 32L
- External Material 600DD Polyester Laminated PVC On Backside
- Foam Core Material And Thickness - 20mm Thickness Sponge Foam
- Internal Material - Heat Sealed PVC Film
- Multi Connect Low Connection Points
- 2x Rod Holders With Bungee Locks

\$139.99

ACS22910



## 20L SEALED SOFT COOLER

### COOLER BAG

- Outer Fabric Made From Heavy Duty Denier Fabric And PVC Badging.
- 24 X 375ml Can (15 Bottles) Capacity And 20 Litre Internal Capacity
- Inner Fabric Features Peva Lining With Foam For Insulation
- Shoulder Strap For Comfortable Transport
- Mesh Side Pockets.

\$59.99

ACS20940



Blue

## BACK REST CHILLED SEAT BAG

### ESKY SEAT

- 600D polyester
- Backpack and shoulder straps
- Interior cooling
- 10L capacity
- Steel tube frame
- Fold out seat with back rest
- Custom topography yardage
- Bottle opener

\$64.99

ACS23306



Sage



## CHILLED SEAT BAG

### COOLER CHAIR

- Adjustable Backpack Straps
- Foldable Seat For Ease Of Storage
- Internal Esky To Keep Your Drinks Cool
- Multiple Zippered Pockets
- 10L Capacity
- Can hold up to 6 standard bottles

\$59.99

ACS21306



Black





# PROMO ITEMS







## JP WOODEN ISLAND DISPLAY RACK

- 1440mm Wide X 940mm Deep X 1440mm Height
- Screened Logos
- Hanging Rails
- Plywood Manufactured From Sustainably Managed Forests And Satisfying The Requirements Of FSC Principles And Criteria Quality

**\$599.99** **PROMO109**



## JP HANGERS COAT HANGERS

One Size Pant Hanger / One Size Shirt Hanger

**\$2.00** **PROMO119**



## JP COUNTER STAND DISPLAY RACK

Base Width: 215mm  
Height: 215mm

**\$14.95** **PROMO187**



## SIGN CLIP SIGN CLIP

- Sleek Black Look
- Spring Loaded Clamp Tightly Grips Tubes Up To 33mm Thick
- Non-slip Surface On Both Ends
- Rotating Head Position.

**\$6.50** **PROMO171**



## FOAM CORE SIGN 500MM X 200MM SIGN

- 500mm x 200mm Double Sided Foam Core Signage.

**\$6.75** **PROMO170**



# JET PILOT

MADE FOR

WATER WORK

## QLD

### CROSS CURRENTS MARKETING

#### DANIEL BINSKIN

m 0419 756 713  
e danbinskin@ozemail.com.au  
p 07 5576 4944  
f 07 5576 4833

#### STACEY KEATING

m 0433 972 526  
e crosscurrents@ozemail.com.au

## NSW

### ACTION AGENCIES

#### ROSS HAWKE

m 0438 711 733  
e rhawke@actionagencies.com.au

## SA

### PREMIER LIFESTYLE AGENCIES

#### ANGELO CARROZZA

m 0421 612 783  
e angelo@premierlifestyleagencies.com.au  
p (08) 8347 7766

## WA

### RUNWAY MARKETING

#### BRANDT DYSON

m 0418 926 903  
e brandt@runwaymarketing.com.au  
p 08 9385 3676

## VIC

### D.A.S AGENCIES

#### DARREN SEAL

m 0410 313 720  
e darrenseal@bigpond.com

## NZ

### TRITAN IMPORTS LTD

#### KOENRAAD GROOT

p +64 7 572 0375  
a Po Box 4490, Mount Maunganui, NZ

#### MATTHEW NORRIE




p 027 371 3300  
e mat@tritan.co.nz

### JETPILOT AUSTRALIA PTY LTD

1/10 KINGSTON DR, HELENSVALE, QLD  
AUSTRALIA, 4212

PO Box 3434, Helensvale Town Centre  
Qld, 4212

p +61 (0) 7 5665 8333  
f +61 (0) 7 5665 8444  
w jetpilot.com.au  
e customerservice@jpihq.com

  @jetpilotcompany  
 @jetpilotworkwear